

DELAWARE

DEMOGRAPHICS

Total Population: 864,764



Race and Ethnicity

White: 625,354

Black or African American: 175,682

American Indian and Alaska Native: 2,223

Asian: 25,372

Native Hawaiian and Other Pacific Islander: 532

Some other race: 18,623

Two or more races: 16,978

Not Hispanic or Latino: 808,611

Hispanic or Latino: 56,153

Gender

Male: 418,659

Female: 446,105

Age Group Breakout

Under Age 5: 59,162

5-17 years: 146,470

18-44 years: 316,426

45-64 years: 225,625

65 years or Older: 117,081

Poverty and Income

Total Population for Whom Poverty Status Was Determined: 838,497 (or 97% of total population)

Population Under 100% FPL: 87,956

101-Under 200% FPL: 132,354

200% FPL – Under 300% FPL: 125,189

300% FPL and Above: 492,998

Total Households: 328,447

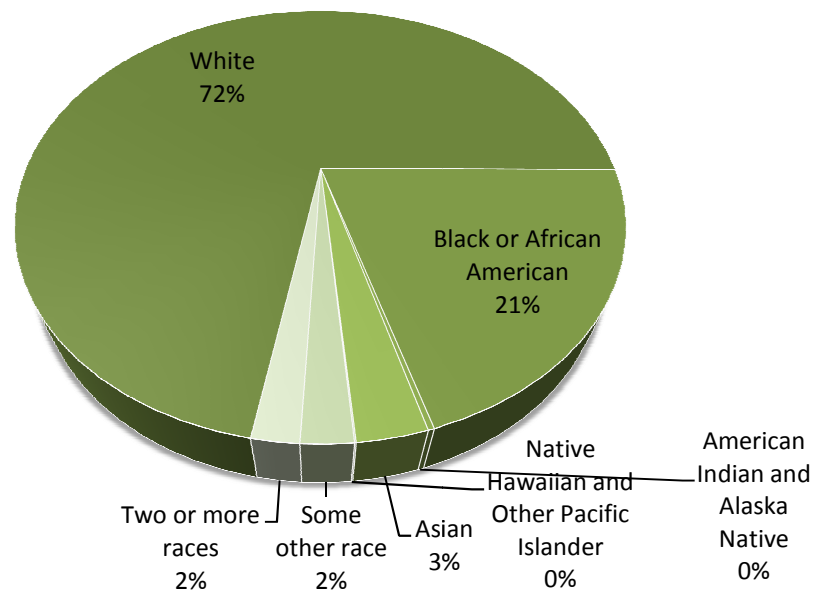
Number of Households with Annual Income under \$20,000: 51,283

Households between \$20,000 - \$44,999: 80,780

Households between \$45,000 - \$59,999: 45,117

Households between \$60,000 - \$99,999: 78,946

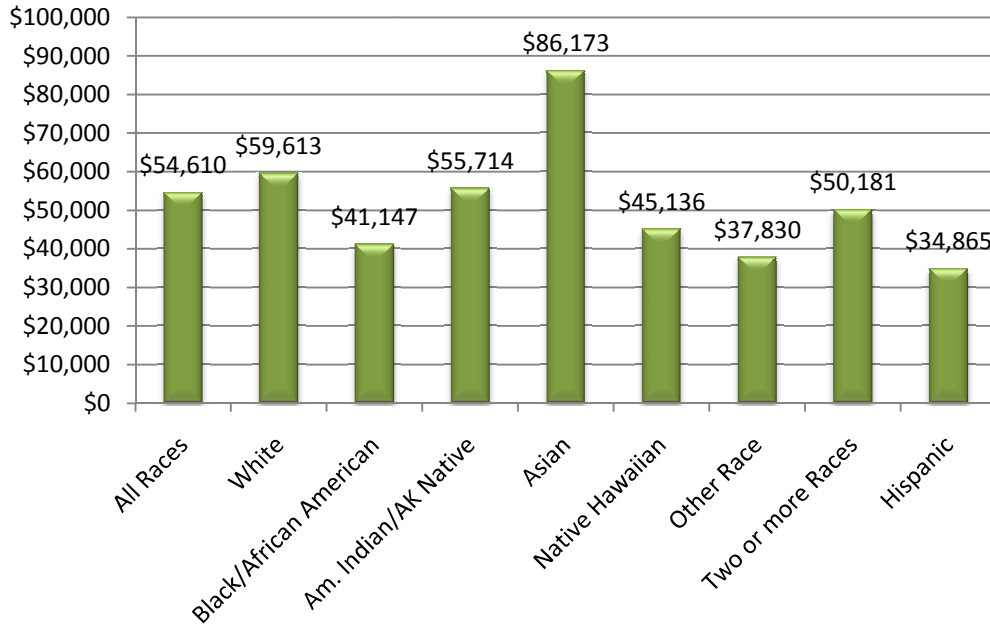
Households \$100,000 or above: 72,351



DELAWARE



Median Household Income & Median Income by Race/Ethnicity



Language – Linguistically Isolated Households

Total Households: 328,477

Total: Spanish: Linguistically isolated: 4,863

Total: Other Indo-European languages: Linguistically isolated: 1,442

Total: Asian and Pacific Island languages: Linguistically isolated: 1,366

Total: Other languages: Linguistically isolated: 1,093

Total Households Linguistically Isolated: 8,764

Percentage of Households Linguistically Isolated: 2.6%

Education Attainment for Population ages 25 years or Older

Pop. Over 25 years: 573,935

Less Than High School: 72,187

High School Diploma or Equivalency: 191,244

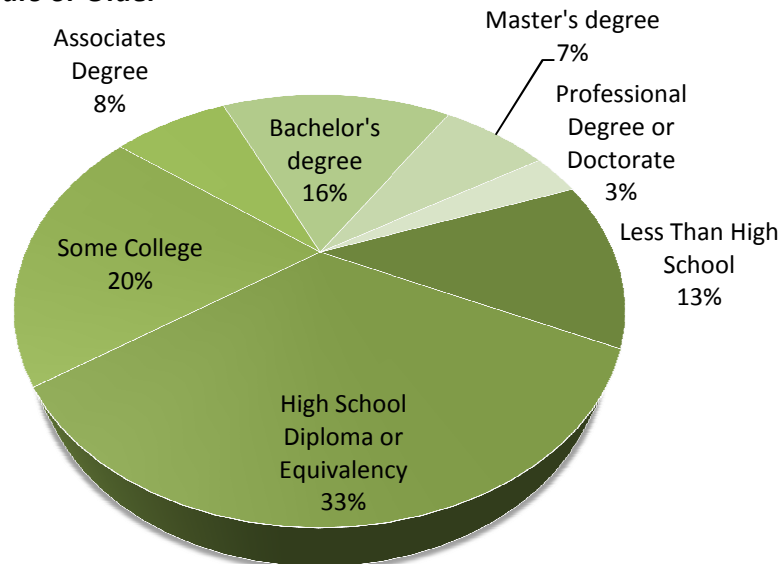
Some College: 115,727

Associates Degree: 44,904

Bachelor's Degree: 90,173

Master's Degree: 41,301

Professional Degree or Doctorate: 18,399



DELAWARE



VITAL STATISTICS

5-YEAR Age Adjusted Death Rate For Selected Causes of Death (per 100,000)

	DELAWARE	KENT	NEW CASTLE	SUSSEX	WHITE	BLACK/AA
Diseases of the heart	222.7	267.9	217.5	210.7	215.5	269.6
Malignant neoplasms	193.9	206.7	193.2	190.5	189.8	225.9
Cerebrovascular diseases	43.9	48.6	47.4	34.2	41.5	59.2
Chronic lower respiratory diseases	40.3	49.7	38.7	38.8	41.6	31.4
Accidents (unintentional injuries)	35.1	40.7	31.7	42.6	37.5	28.9
Diabetes mellitus	24.4	30.6	24.2	21.8	21.3	45.7
Alzheimer's disease	18.4	13.2	18.1	21.6	18.8	14
Influenza and pneumonia	16.8	20	14.2	20.5	16.8	16.8
Dementia	16.1	14.3	18.6	11.9	15.4	22.4
Nephritis, nephrotic syndrome, and nephrosis	14.8	16.7	14.9	13.5	12.9	27.6
Septicemia	14.2	18.6	14.6	11.5	12.9	22.5
Intentional self-harm (suicide)	10.2	10.4	10	10.8	11.8	5.1
Chronic liver disease and cirrhosis	9.1	10.1	8.8	9.2	9.6	7.1
Other diseases of respiratory system	8.9	10.3	8.6	8.4	9	6.8
Human immunodeficiency virus (HIV)	7.7	5.3	9.6	3.9	2.3	30.7
Certain conditions originating in the perinatal period	7.5	6.6	8	6.5	5	14.7
Pneumonitis due to solids and liquids	7.1	5	7.4	7.5	6.7	8.7
Essential (primary) hypertension and hypertensive renal disease	6.8	9.1	6.9	5	5.6	14.7
Parkinson's disease	5.4	4.6	6	4.7	5.8	NA
Aortic aneurysm and dissection	5	7.2	4.4	5.3	5	5.2
Assault (homicide)	5	3.1	5.9	3.3	2.4	13.3
Congenital malformations, deformations, and chromosomal abnormalities	3.1	3.4	2.9	3.7	3	3.3

Trends in 5-Year Age Adjusted Mortality Rates for Selected Causes: Delaware

	1996-2000	1997-2001	1998-2002	1999-2003	2000-2004	2001-2005	2002-2006
Diseases of the heart	274.7	266.8	256.7	251.3	243	235.5	222.7
Malignant neoplasms	221	217.5	210.2	205.8	201.8	200.2	193.9
Cerebrovascular diseases	51.8	51.5	51.5	50.8	48.6	45.7	43.9
Chronic lower respiratory diseases	42.4	41.8	42.1	41.1	40.3	40.7	40.3
Diabetes mellitus	26.9	26.9	26.3	25.7	25.7	25.9	24.4
Influenza and pneumonia	30.2	28.7	26.1	22.1	21	18.6	16.8
Dementia	6.5	7.1	8.5	9.4	10.5	12.1	16.1
Alzheimer's disease	11	13.1	14.6	16.5	16.9	17.9	18.4

DELAWARE



Nephritis, nephrotic syndrome, and nephrosis	13.5	13.5	14.1	14.2	14.4	14.3	14.8
Septicemia	15.2	15.6	15.9	15.9	15.8	15	14.2
Human immunodeficiency virus (HIV)	9.9	8.1	8.2	8.7	8.4	8.2	7.7
Accidents (unintentional injuries)	36	36.8	36.3	35.9	35.8	35.1	35.1
Intentional self-harm (suicide)	11	11.2	10.7	11.1	11.1	10.9	10.2
Assault (homicide)	4.2	3.6	3.7	3.6	3.8	4.5	5

5-year Average Infant Mortality by Race: 2001-2006

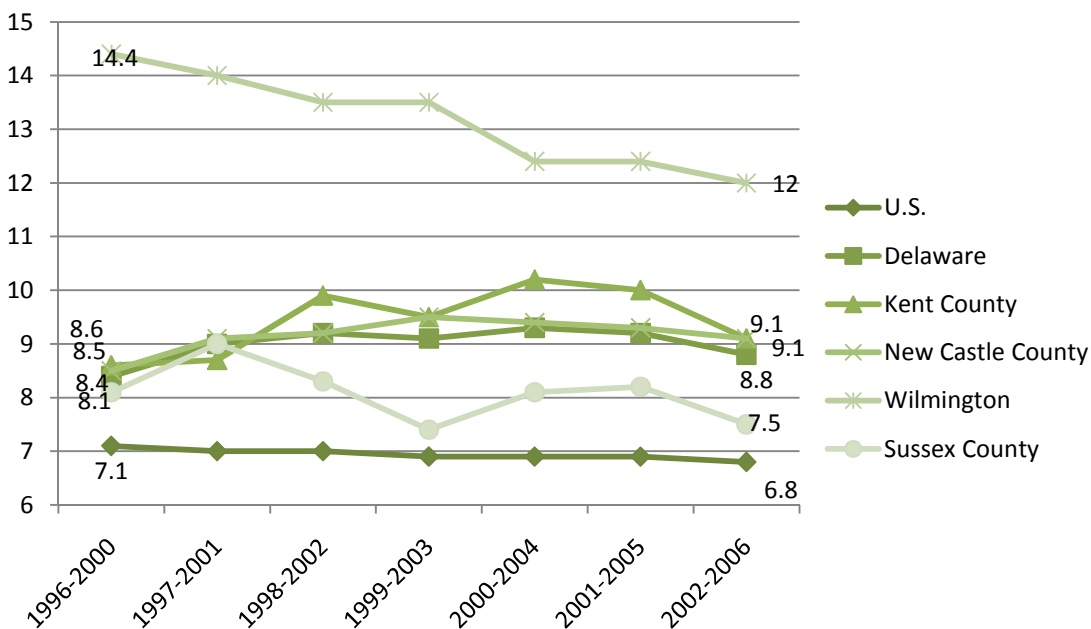
	Total	White	Black/African America
U.S.*	6.8	5.7	14
Delaware	8.8**	6.4	16.1
New Castle County	9.1	6.8	16.3
Wilmington	12	--	16.3
Sussex County	7.5	5	16.9
Kent County	9.1	7	14.8

* Data for the U.S. was not available for reference years 2002-2006 for White and Black Infant Mortality. The rates states for these races are for years 2001-2005.

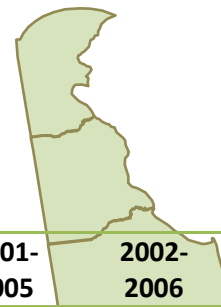
**Indicates Rate is significantly higher than U.S. rate.

-- Limited data, not reported.

Trend in 5-Year Average Infant Mortality Rates: 1996-2006



DELAWARE



Low-Birth Weight Births 2008

	1996-2000	1997-2001	1998-2002	1999-2003	2000-2004	2001-2005	2002-2006
U.S.	7.5%	7.6%	7.6%	7.7%	7.8%	7.9%	na
Delaware	8.6%	8.8%	9.0%	9.2%	9.3%	9.4%	9.4%
Kent County	8.1%	8.6%	8.9%	9.2%	9.3%	9.5%	9.4%
New Castle County	8.8%	9.1%	9.3%	9.6%	9.7%	9.9%	9.9%
Wilmington	13.1%	13.5%	14.2%	14.1%	14.0%	14.4%	13.9%
Sussex County	8.3%	7.8%	7.9%	8.0%	8.0%	7.8%	8.0%

BEHAVIORAL RISK FACTOR SURVEILLANCE SYSTEM

The following data is for the population 18 years of age and older.

Response	Percentage	Confidence Interval +/-
HEALTH STATUS: HOW IS YOUR HEALTH IN GENERAL?		
EXCELLENT	20.2%	1.9
VERY GOOD	36.9%	2.3
GOOD	29.7%	2.2
FAIR	9.4%	1.3
POOR	3.7%	0.8

CHRONIC DISEASES

Response	Percentage	Confidence Interval +/-
CARDIOVASCULAR: HAS A DR EVER TOLD YOU THAT YOU HAD A HEART ATTACK?		
YES	4.5%	0.7
NO	95.5%	0.8
CARDIOVASCULAR: HAS A DR EVER TOLD YOU THAT YOU HAD A STROKE?		
YES	2.9%	0.6
NO	97.1%	0.7
HYPERTENSION: EVER BEEN TOLD BY A HEALTH PROFESSIONAL THAT YOU HAVE HIGH BLOOD PRESSURE?*		
YES	29.3%	0.74
NO	70.7%	1.8
DIABETES: EVER TOLD BY A DOCTOR THAT YOU HAVE DIABETES?		
YES	8.3%	1.0
YES BUT FEMALE TOLD DURING PREGNANCY	0.6%	0.3
NO, BORDERLINE DIABETES	1.0%	.5
NO	90.1%	1.2

DELAWARE



BEHAVIORS/LIFESTYLE INDICATORS

Response	Percentage	Confidence Interval +/-
ALCOHOL: BINGE DRINKING-FIVE OR MORE DRINKS ON ONE OCCASION IN THE PAST MONTH		
YES	17.9%	2.2
NO	82.1%	2.2
TOBACCO: CURRENT SMOKER (SMOKED AT LEAST 100 CIGARETTES IN THEIR LIFETIME AND CURRENTLY SMOKING)		
YES	17.8%	1.8
NO	82.2%	1.8
WEIGHT CONTROL: WEIGHT CLASSIFICATIONS BASED ON BODY MASS INDEX		
NOT OVERWEIGHT/OBESE (BMI<=24.9)	36.2%	2.4
OVERWEIGHT (BMI 25.0 - 29.9)	36%	2.2
OBESE (BMI 30.0 AND ABOVE)	27.8%	2.1

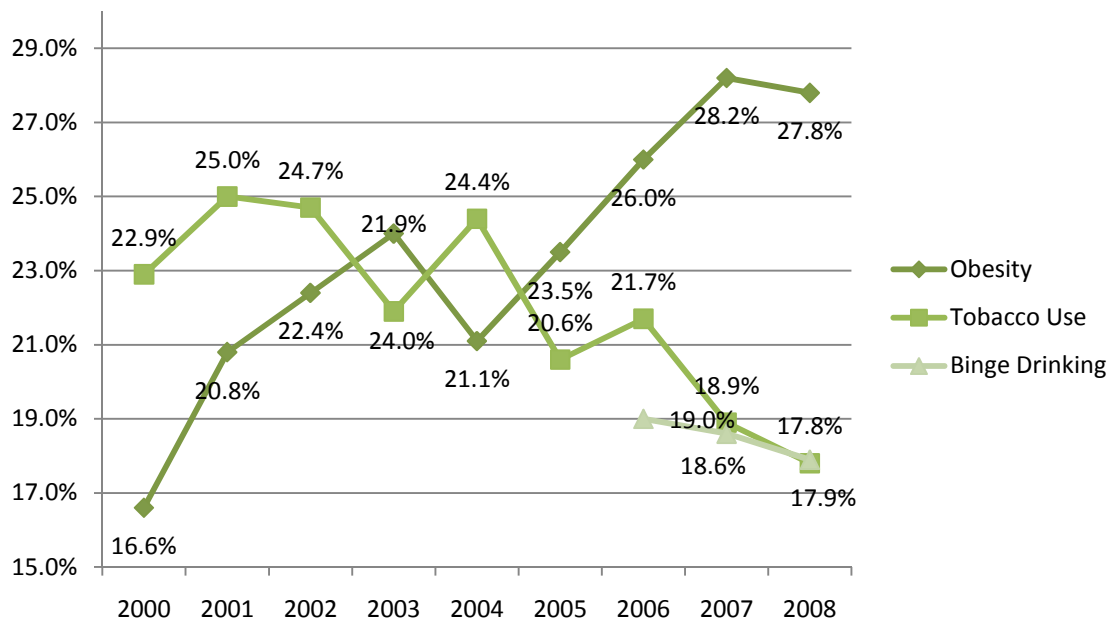
PREVENTATIVE CARE/TESTING

Response	Percentage	Confidence Interval +/-
IMMUNIZATION: ADULTS AGED 65+ WHO HAVE HAD A FLU SHOT IN THE PAST YEAR?		
YES	69.6%	3.5
NO	30.4%	3.4
WOMENS HEALTH:? WOMEN AGE 40 AND OVER HAD A MOMMOGRAM WITHIN THE PAST 2 YEARS.		
DID NOT HAVE EXAM	17.7%	2.2
HAD EXAM	82.3%	2.2
HIV/AIDS: HAVE YOU EVER BEEN TESTED FOR HIV?		
YES	54%	2.7
NO	46%	2.7
MEN AGES 40 AND OVER WHO HAVE HAD A PSA TEST WITHIN THE PAST TWO YEARS.		
DID NOT HAVE EXAM	42.9%	4
HAD EXAM	57.1%	4

DELAWARE



BEHAVIORAL & LIFESTYLE RISK FACTOR TRENDS: 2000-2008



ORAL HEALTH

Year	Percentage	Confidence Interval +/-
ORAL HEALTH: HAVE YOU VISITED A DENTIST OR DENTAL CLINIC WITHIN THE PAST YEAR FOR ANY REASON? <i>Trend data shown for Yes responses only.</i>		
1999	73%	2.4
2002	75.2%	1.9
2004	77.2%	1.8
2006	76.3%	1.9
2008	76.9%	2

SOURCES

Demographics

American Community Survey, 2007

Vital Statistics

Delaware Health and Social Services, Division of Public Health Delaware Vital Statistics Annual Report 2006. Please note this was the most recent report available at the time this report was compiled. Available at <http://www.dhss.delaware.gov/dhss/dph/hp/2006.html>.

Behavioral Risk Factor Surveillance System

Delaware Health and Social Services, Division of Public Health, Behavioral Risk Factor Surveillance System (BRFSS), [2000-2008]. All data presented in charts is for year 2008, unless marked by a *. This data is from 2007 – due to availability.