

KENT COUNTY, DELAWARE



DEMOGRAPHICS

Total Population: 152,255

Race and Ethnicity

White: 108,086

Black or African American: 33,740

American Indian and Alaska Native: 487

Asian: 4,264

Native Hawaiian and Other Pacific Islander: 223

Some other race: 1,974

Two or more races: 3,481

Not Hispanic or Latino: 145,875

Hispanic or Latino: 6,380

Male: 72,436

Female: 79,819

Age Group Breakout

Under Age 5: 11,405

5-17 years: 27,365

18-44 years: 57,440

45-64 years: 36,827

65 years or Older: 19,218

Poverty and Income

Total Population by Federal Poverty Level

Under 100% FPL: 18,618

101-Under 200% FPL : 28,044

200% FPL - Under 300%: 25,155

Above 300% FPL: 75,396

Total Households: 57,430

Total Households with Annual Income Under \$20,000: 12,366

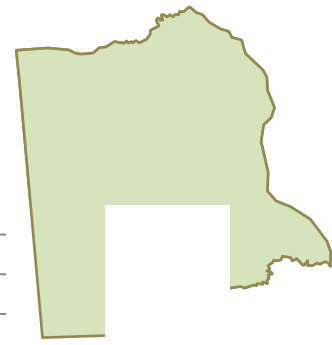
Households between \$20,000 - \$44,999: 15,126

Households between \$45,000 - \$59,999: 8,297

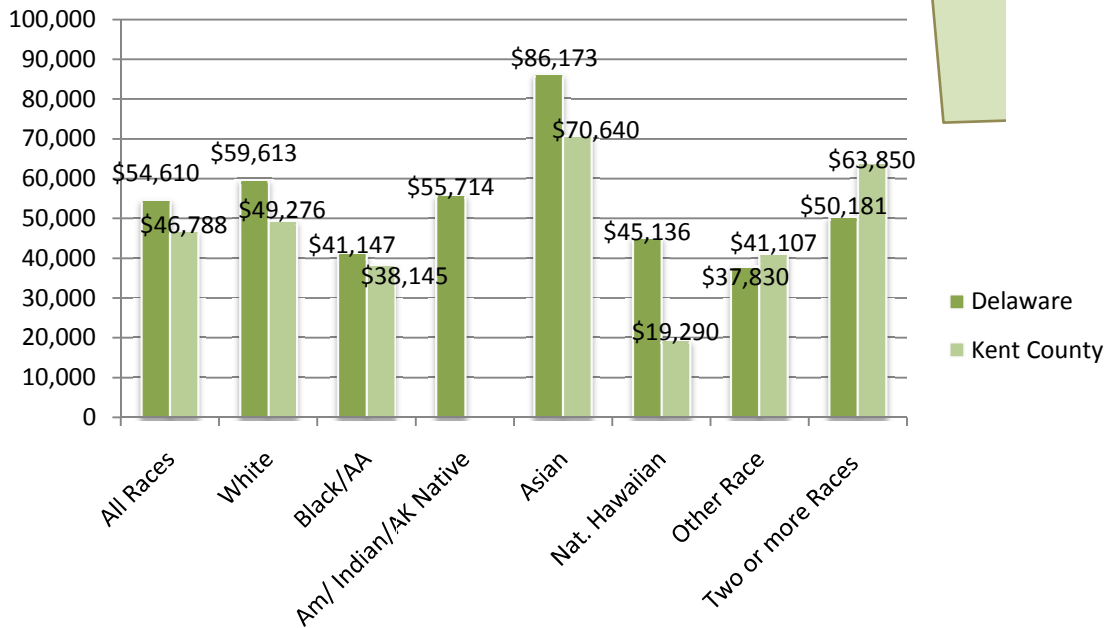
Households between \$60,000 - \$99,999: 12,914

Households between \$100,000 +: 8,727

KENT COUNTY, DELAWARE



Median Household Income by Race



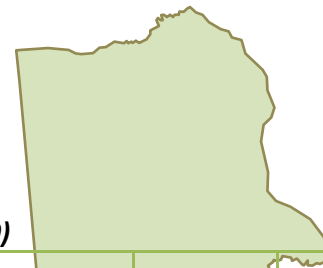
Linguistically Isolated Households

Total Households:	57,430
Spanish: Linguistically isolated:	690
Other Indo-European languages: Linguistically isolated:	279
Asian and Pacific Island languages: Linguistically isolated:	59
Other languages: Linguistically isolated:	181
Total Linguistically Isolated Households:	1,209
Percentage of Households Linguistically Isolated:	2.1%

Educational Attainment for Population ages 25 years or Older

Total Pop 25 Years and Above:	97,796
Less Than High School:	14,157
High School Diploma or Equivalency:	34,981
Some College:	20,299
Associates Degree:	10,039
Bachelor's degree:	11,841
Master's degree:	1,868

KENT COUNTY, DELAWARE



VITAL STATISTICS

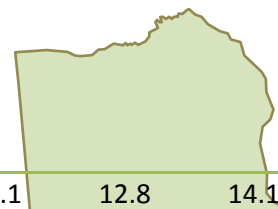
5-YEAR Age Adjusted Death Rate For Selected Causes of Death (per 100,000)

	DELAWARE	KENT	NEW CASTLE	SUSSEX	WHITE	BLACK/AA
Diseases of the heart	222.7	267.9	217.5	210.7	215.5	269.6
Malignant neoplasms	193.9	206.7	193.2	190.5	189.8	225.9
Cerebrovascular diseases	43.9	48.6	47.4	34.2	41.5	59.2
Chronic lower respiratory diseases	40.3	49.7	38.7	38.8	41.6	31.4
Accidents (unintentional injuries)	35.1	40.7	31.7	42.6	37.5	28.9
Diabetes mellitus	24.4	30.6	24.2	21.8	21.3	45.7
Alzheimer's disease	18.4	13.2	18.1	21.6	18.8	14
Influenza and pneumonia	16.8	20	14.2	20.5	16.8	16.8
Dementia	16.1	14.3	18.6	11.9	15.4	22.4
Nephritis, nephrotic syndrome, and nephrosis	14.8	16.7	14.9	13.5	12.9	27.6
Septicemia	14.2	18.6	14.6	11.5	12.9	22.5
Intentional self-harm (suicide)	10.2	10.4	10	10.8	11.8	5.1
Chronic liver disease and cirrhosis	9.1	10.1	8.8	9.2	9.6	7.1
Other diseases of respiratory system	8.9	10.3	8.6	8.4	9	6.8
Human immunodeficiency virus (HIV)	7.7	5.3	9.6	3.9	2.3	30.7
Certain conditions originating in the perinatal period	7.5	6.6	8	6.5	5	14.7
Pneumonitis due to solids and liquids	7.1	5	7.4	7.5	6.7	8.7
Essential (primary) hypertension and hypertensive renal disease	6.8	9.1	6.9	5	5.6	14.7
Parkinson's disease	5.4	4.6	6	4.7	5.8	NA
Aortic aneurysm and dissection	5	7.2	4.4	5.3	5	5.2
Assault (homicide)	5	3.1	5.9	3.3	2.4	13.3
Congenital malformations, deformations, and chromosomal abnormalities	3.1	3.4	2.9	3.7	3	3.3

Trends in 5-Year Age Adjusted Mortality Rates for Selected Causes: Kent County

	1996-2000	1997-2001	1998-2002	1999-2003	2000-2004	2001-2005	2002-2006
Diseases of the heart	307.8	303.4	295.9	290	278.7	275.1	267.9
Malignant neoplasms	220.2	221.4	218.4	217.1	211.2	213.5	206.7
Cerebrovascular diseases	60.5	54.9	55.6	53.5	50.4	49.4	48.6
Chronic lower respiratory diseases	52.4	49.2	45	44.5	45.5	48.8	49.7
Diabetes mellitus	28.8	27.5	28.2	27.9	27.2	30.5	30.6
Influenza and pneumonia	36.4	34	31.6	27.2	24.8	20.4	20
Dementia	8.5	8.8	12.6	13.9	14.5	13.1	14.3

KENT COUNTY, DELAWARE



Alzheimer's disease	5	8.7	10.1	12.1	12.8	14.1	13.2
Nephritis, nephrotic syndrome, and nephrosis	12.4	15.3	17.6	17.9	19.9	18.3	16.7
Septicemia	13.8	14.3	15.6	16.9	18.3	17.7	18.6
Human immunodeficiency virus (HIV)	5.9	5.2	4.8	5.2	5.1	5.2	5.3
Accidents (unintentional injuries)	37.5	38.9	37.7	37.6	38.3	38.9	40.7
Intentional self-harm (suicide)	12.6	12.1	11.7	11.5	10.5	10.2	10.4
Assault (homicide)	---	---	---	---	---	---	3.1

-- Limited data, not reported.

5-year Average Infant Mortality by Race: 2001-2006

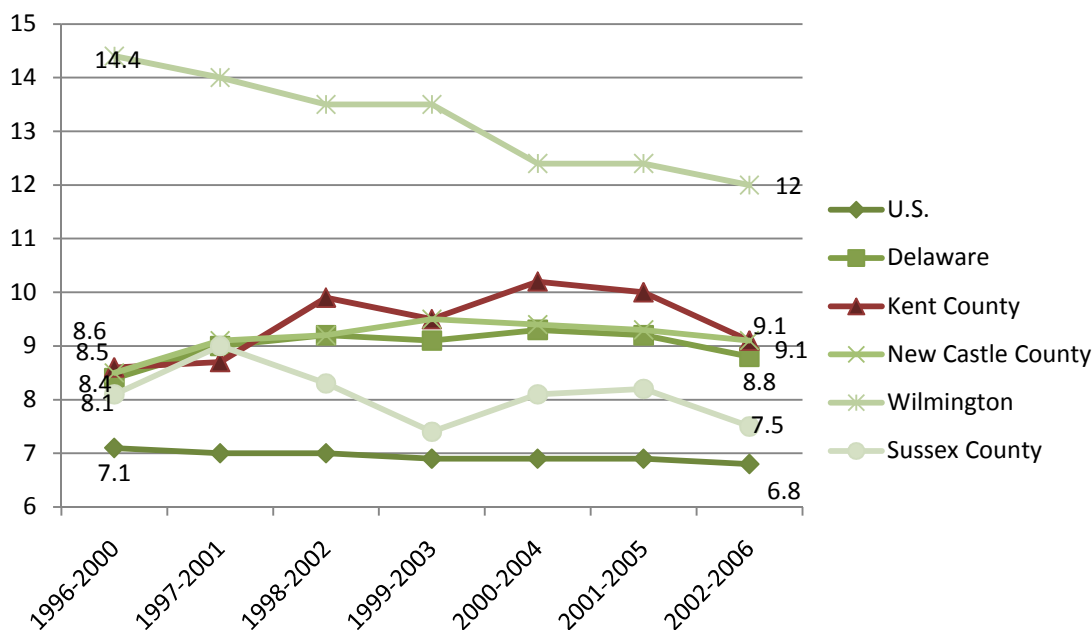
	Total	White	Black/African America
U.S.*	6.8	5.7	14
Delaware	8.8**	6.4	16.1
Kent County	9.1	7	14.8
New Castle County	9.1	6.8	16.3
Wilmington	12	--	16.3
Sussex County	7.5	5	16.9

* Data for the U.S. was not available for reference years 2002-2006 for White and Black Infant Mortality. The rates states for these races are for years 2001-2005.

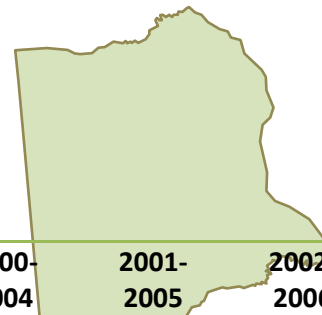
**Indicates Rate is significantly higher than U.S. rate.

-- Limited data, not reported.

Trend in 5-Year Average Infant Mortality Rates: 1996-2006



KENT COUNTY, DELAWARE



Low-Birth Weight Births 2008

	1996- 2000	1997- 2001	1998- 2002	1999- 2003	2000- 2004	2001- 2005	2002- 2006
U.S.	7.5%	7.6%	7.6%	7.7%	7.8%	7.9%	na
Delaware	8.6%	8.8%	9.0%	9.2%	9.3%	9.4%	9.4%
Kent County	8.1%	8.6%	8.9%	9.2%	9.3%	9.5%	9.4%
New Castle County	8.8%	9.1%	9.3%	9.6%	9.7%	9.9%	9.9%
Wilmington	13.1%	13.5%	14.2%	14.1%	14.0%	14.4%	13.9%
Sussex County	8.3%	7.8%	7.9%	8.0%	8.0%	7.8%	8.0%

BEHAVIORAL RISK FACTOR SURVEILLANCE SYSTEM

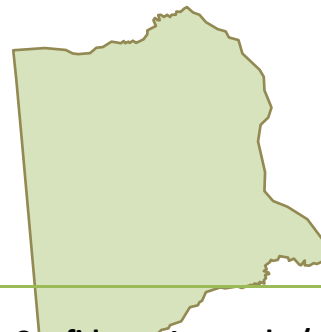
The following data is for the population 18 years of age and older.

Response	Percentage	Confidence Interval +/-
<i>HEALTH STATUS: HOW IS YOUR HEALTH IN GENERAL?</i>		
EXCELLENT	14.1%	2.4
VERY GOOD	36.9%	3.3
GOOD	32.6%	3.3
FAIR	11.8%	2.2
POOR	4.7%	1.2

CHRONIC DISEASES

Response	Percentage	Confidence Interval +/-
<i>CARDIOVASCULAR: HAS A DR EVER TOLD YOU THAT YOU HAD A HEART ATTACK?</i>		
YES	4.9%	1.4
NO	95.1%	1.4
<i>CARDIOVASCULAR: HAS A DR EVER TOLD YOU THAT YOU HAD A STROKE?</i>		
YES	2.9%	0.8
NO	97.1%	0.8
<i>HYPERTENSION: EVER BEEN TOLD BY A HEALTH PROFESSIONAL THAT YOU HAVE HIGH BLOOD PRESSURE?*</i>		
YES	29.1%	2.9
NO	70.9%	2.9
<i>DIABETES: EVER TOLD BY A DOCTOR THAT YOU HAVE DIABETES?</i>		
YES	11.5%	2.0
YES BUT FEMALE TOLD DURING PREGNANCY	0.7%	0.4
NO, BORDERLINE DIABETES	1.3%	1
NO	86.5%	2.4

KENT COUNTY, DELAWARE



BEHAVIORS/LIFESTYLE INDICATORS

Response	Percentage	Confidence Interval +/-
ALCOHOL: BINGE DRINKING-FIVE OR MORE DRINKS ON ONE OCCASION IN THE PAST MONTH		
YES	14.4%	2.9
NO	85.6%	2.9
TOBACCO: CURRENT SMOKER (SMOKED AT LEAST 100 CIGARETTES IN THEIR LIFETIME AND CURRENTLY SMOKING)		
YES	21.0%	2.9
NO	79%	2.9
WEIGHT CONTROL: WEIGHT CLASSIFICATIONS BASED ON BODY MASS INDEX		
NOT OVERWEIGHT/OBESE (BMI<=24.9)	31.2%	3.3
OVERWEIGHT (BMI 25.0 - 29.9)	37.6%	3.3
OBESE (BMI 30.0 AND ABOVE)	31.2%	3.3

PREVENTATIVE CARE/TESTING

Response	Percentage	Confidence Interval +/-
IMMUNIZATION: ADULTS AGED 65+ WHO HAVE HAD A FLU SHOT IN THE PAST YEAR?		
YES	68.6%	5.1
NO	31.4%	5.1
WOMENS HEALTH: ? WOMEN AGE 40 AND OVER HAD A MOMMOGRAM WITHIN THE PAST 2 YEARS.		
DID NOT HAVE EXAM	19.6%	3.5
HAD EXAM	80.4%	3.5
MEN AGES 40 AND OVER WHO HAVE HAD A PSA TEST WITHIN THE PAST TWO YEARS.		
DID NOT HAVE EXAM	39.5%	6.3
HAD EXAM	60.5%	6.3

ORAL HEALTH

Year	Percentage	Confidence Interval +/-
ORAL HEALTH: HAVE YOU VISTED A DENTIST OR DENTAL CLINIC WITHIN THE PAST YEAR FOR ANY REASON?		
YES	70.5%	3.1
NO	29.5%	3.1

KENT COUNTY, DELAWARE



SOURCES

Demographics

American Community Survey, 2007

Vital Statistics

Delaware Health and Social Services, Division of Public Health Delaware Vital Statistics Annual Report 2006. Please note this was the most recent report available at the time this report was compiled. Available at <http://www.dhss.delaware.gov/dhss/dph/hp/2006.html>.

Behavioral Risk Factor Surveillance System

Delaware Health and Social Services, Division of Public Health, Behavioral Risk Factor Surveillance System (BRFSS), [2000-2008]. All data presented in charts is for year 2008, unless marked by a *. This data is from 2007 – due to availability.