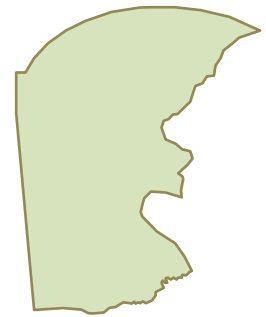


# NEW CASTLE COUNTY, DELAWARE



## DEMOGRAPHICS

Total Population 528,218

### ***Race and Ethnicity***

White 371,886  
Black or African American 117,755  
American Indian and Alaska Native 894  
Asian 19,341  
Native Hawaiian and Other Pacific Islander 230  
Some other race 7,237  
Two or more races 10,875

Not Hispanic or Latino 490,356  
Hispanic or Latino 37,862

### ***Gender***

Male 256,092  
Female 272,126

### ***Age Group Breakout***

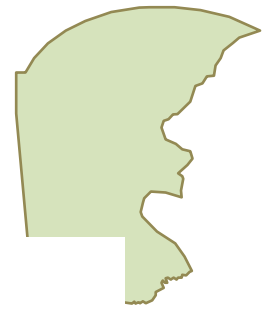
Under Age 5 35,809  
5-17 years 91,058  
18-44 years 198,803  
45-64 years 141,250  
65 years or Older 61,298

### ***Income and Poverty***

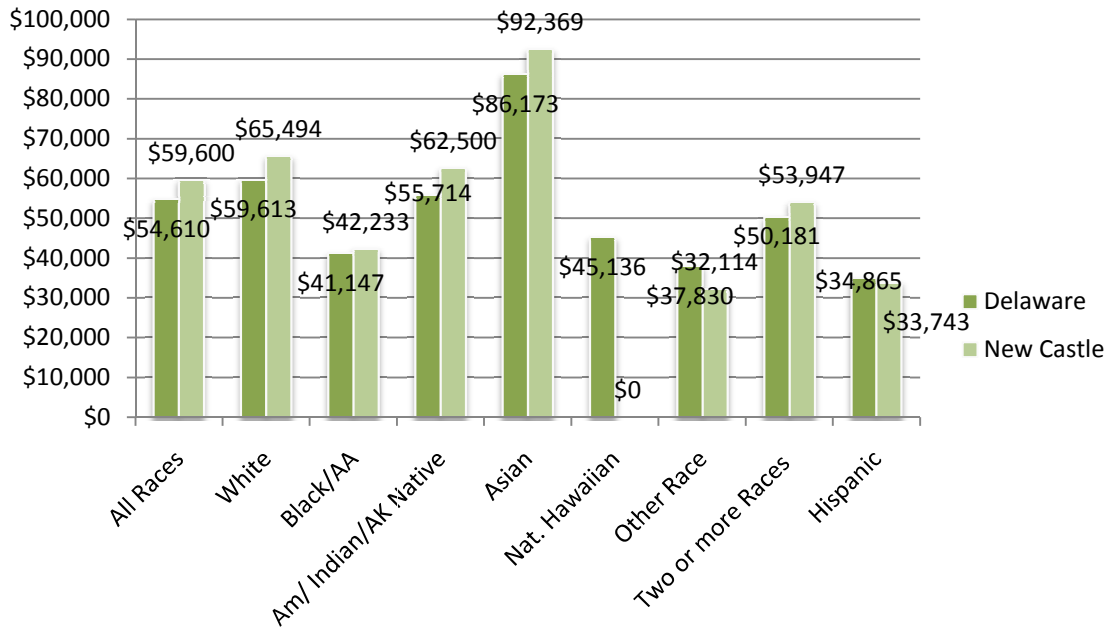
Total Population Income was determined 509,609 (or 96.5%)  
Under 100% FPL 52,638  
101-Under 200% FPL 68,976  
200% FPL - Under 300% 67,940  
Above 300% FPL 320,055

Total Households 196,332  
Households with Income Under \$20,000 25,614  
Households between \$20,000 - \$44,999 45,525  
Households between \$45,000 - \$59,999 27,663  
Households between \$60,000 - \$99,999 46,385  
Households between \$100,000 + 51,145

# NEW CASTLE COUNTY, DELAWARE



## Median Household Income by Race



### Linguistic Isolation

Total Households	196,332
Spanish: Linguistically isolated	2,680
Other Indo-European languages:	
Linguistically isolated	961
Asian and Pacific Island languages:	
Linguistically isolated	1,259
Other languages: Linguistically isolated	836
Total Linguistically Isolated Households	5,736

### Educational Attainment for the Population 25 years of Age and Older

Total Pop 25 Years and Above	345,665
Less Than High School	36,543
High School Diploma or Equivalency	107,281
Some College	71,084
Associates Degree	25,181
Bachelor's degree	63,787
Master's degree	28,043
Professional Degree or Doctorate	13,746

# NEW CASTLE COUNTY, DELAWARE



## VITAL STATISTICS

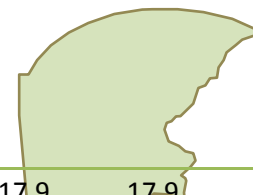
### 5-YEAR Age Adjusted Death Rate For Selected Causes of Death (per 100,000)

	DELAWARE	KENT	NEW CASTLE	SUSSEX	WHITE	BLACK/AA
Diseases of the heart	222.7	<b>267.9</b>	217.5	210.7	215.5	269.6
Malignant neoplasms	193.9	<b>206.7</b>	193.2	190.5	189.8	225.9
Cerebrovascular diseases	43.9	<b>48.6</b>	47.4	34.2	41.5	59.2
Chronic lower respiratory diseases	40.3	<b>49.7</b>	38.7	38.8	41.6	31.4
Accidents (unintentional injuries)	35.1	<b>40.7</b>	31.7	42.6	37.5	28.9
Diabetes mellitus	24.4	<b>30.6</b>	24.2	21.8	21.3	45.7
Alzheimer's disease	18.4	<b>13.2</b>	18.1	21.6	18.8	14
Influenza and pneumonia	16.8	<b>20</b>	14.2	20.5	16.8	16.8
Dementia	16.1	<b>14.3</b>	18.6	11.9	15.4	22.4
Nephritis, nephrotic syndrome, and nephrosis	14.8	<b>16.7</b>	14.9	13.5	12.9	27.6
Septicemia	14.2	<b>18.6</b>	14.6	11.5	12.9	22.5
Intentional self-harm (suicide)	10.2	<b>10.4</b>	10	10.8	11.8	5.1
Chronic liver disease and cirrhosis	9.1	<b>10.1</b>	8.8	9.2	9.6	7.1
Other diseases of respiratory system	8.9	<b>10.3</b>	8.6	8.4	9	6.8
Human immunodeficiency virus (HIV)	7.7	<b>5.3</b>	9.6	3.9	2.3	30.7
Certain conditions originating in the perinatal period	7.5	<b>6.6</b>	8	6.5	5	14.7
Pneumonitis due to solids and liquids	7.1	<b>5</b>	7.4	7.5	6.7	8.7
Essential (primary) hypertension and hypertensive renal disease	6.8	<b>9.1</b>	6.9	5	5.6	14.7
Parkinson's disease	5.4	<b>4.6</b>	6	4.7	5.8	NA
Aortic aneurysm and dissection	5	<b>7.2</b>	4.4	5.3	5	5.2
Assault (homicide)	5	<b>3.1</b>	5.9	3.3	2.4	13.3
Congenital malformations, deformations, and chromosomal abnormalities	3.1	<b>3.4</b>	2.9	3.7	3	3.3

### Trends in 5-Year Age Adjusted Mortality Rates for Selected Causes: New Castle County

	1996-2000	1997-2001	1998-2002	1999-2003	2000-2004	2001-2005	2002-2006
Diseases of the heart	266.8	259	250	244.8	238.5	231.4	217.5
Malignant neoplasms	223.1	219.4	211.9	205.6	201.7	200.5	193.2
Cerebrovascular diseases	53	53.6	53.8	53.8	52	48.9	47.4
Chronic lower respiratory diseases	41.5	41.7	41.3	40.3	39.7	39	38.7
Diabetes mellitus	26.6	27.2	26.1	25	25.9	25.9	24.2
Influenza and pneumonia	27.5	25.1	23.1	19.1	17.6	15.7	14.2
Dementia	6.3	7.3	8.3	9.2	10.5	13	18.6

## NEW CASTLE COUNTY, DELAWARE



Alzheimer's disease	13.8	15.9	17.3	18.7	17.9	17.9	18.1
Nephritis, nephrotic syndrome, and nephrosis	14.2	13.7	13.5	13.3	13.7	13.9	14.9
Septicemia	17.4	17.4	17.4	17	16.5	15.6	14.6
Human immunodeficiency virus (HIV)	12.1	9.8	9.9	10.8	10.7	10.4	9.6
Accidents (unintentional injuries)	33.9	34.5	34.5	33.6	32.2	31.5	31.7
Intentional self-harm (suicide)	9.8	10.3	9.9	10.7	11	11.2	10
Assault (homicide)	5.1	4.5	4.6	4.3	4.6	5.3	5.9

-- Limited data, not reported.

### 5-year Average Infant Mortality by Race: 2001-2006

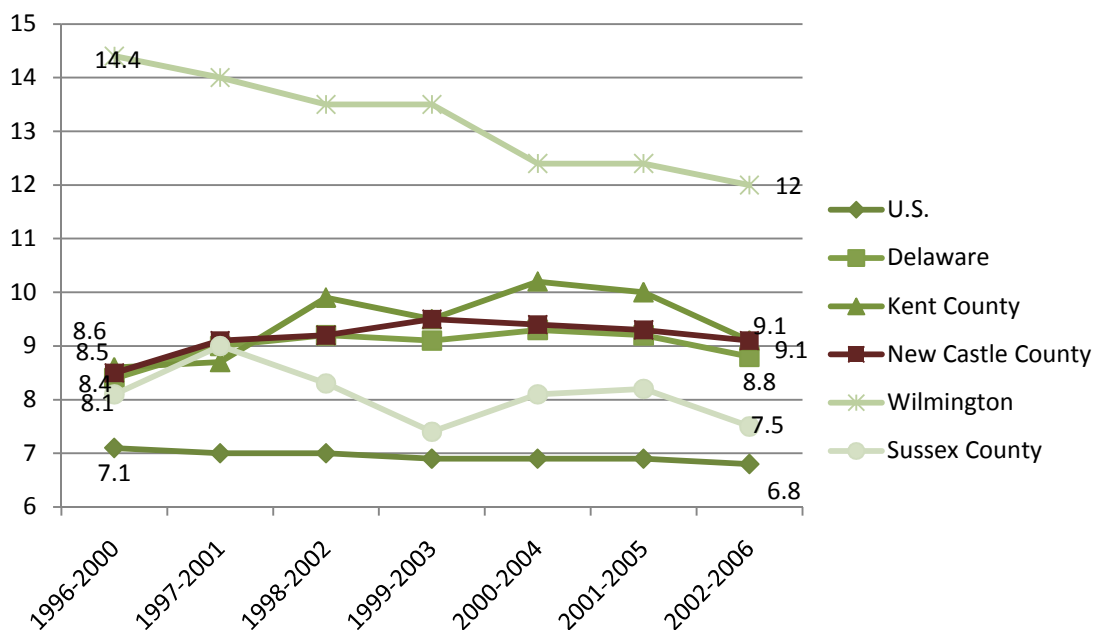
	Total	White	Black/African America
U.S.*	6.8	5.7	14
Delaware	8.8**	6.4	16.1
Kent County	9.1	7	14.8
<b>New Castle County</b>	<b>9.1</b>	<b>6.8</b>	<b>16.3</b>
Wilmington	12	--	16.3
Sussex County	7.5	5	16.9

\* Data for the U.S. was not available for reference years 2002-2006 for White and Black Infant Mortality. The rates states for these races are for years 2001-2005.

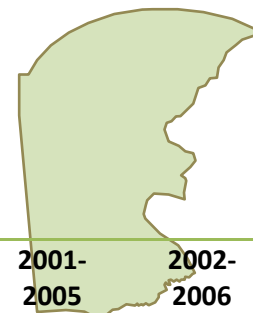
\*\*Indicates Rate is significantly higher than U.S. rate.

-- Limited data, not reported.

### Trend in 5-Year Average Infant Mortality Rates: 1996-2006



## NEW CASTLE COUNTY, DELAWARE



### Low-Birth Weight Births 2008

	1996- 2000	1997- 2001	1998- 2002	1999- 2003	2000- 2004	2001- 2005	2002- 2006
<b>U.S.</b>	7.5%	7.6%	7.6%	7.7%	7.8%	7.9%	na
<b>Delaware</b>	8.6%	8.8%	9.0%	9.2%	9.3%	9.4%	9.4%
<b>Kent County</b>	8.1%	8.6%	8.9%	9.2%	9.3%	9.5%	9.4%
<b>New Castle County</b>	8.8%	9.1%	9.3%	9.6%	9.7%	9.9%	9.9%
<b>Wilmington</b>	13.1%	13.5%	14.2%	14.1%	14.0%	14.4%	13.9%
<b>Sussex County</b>	8.3%	7.8%	7.9%	8.0%	8.0%	7.8%	8.0%

## BEHAVIORAL RISK FACTOR SURVEILLANCE SYSTEM

The following data is for the population 18 years of age and older.

Response	Percentage	Confidence Interval +/-
<b>HEALTH STATUS: HOW IS YOUR HEALTH IN GENERAL?</b>		
<b>EXCELLENT</b>	22.5%	2.9
<b>VERY GOOD</b>	38.6%	3.3
<b>GOOD</b>	27.8%	3.3
<b>FAIR</b>	7.6%	1.8
<b>POOR</b>	3.6%	1.2

### CHRONIC DISEASES

Response	Percentage	Confidence Interval +/-
<b>CARDIOVASCULAR: HAS A DR EVER TOLD YOU THAT YOU HAD A HEART ATTACK?</b>		
<b>YES</b>	3.6%	1.0
<b>NO</b>	96.4%	1.0
<b>CARDIOVASCULAR: HAS A DR EVER TOLD YOU THAT YOU HAD A STROKE?</b>		
<b>YES</b>	2.4%	0.8
<b>NO</b>	97.6%	0.8
<b>HYPERTENSION: EVER BEEN TOLD BY A HEALTH PROFESSIONAL THAT YOU HAVE HIGH BLOOD PRESSURE?*</b>		
<b>YES</b>	26.5%	2.5
<b>NO</b>	73.5%	2.5
<b>DIABETES: EVER TOLD BY A DOCTOR THAT YOU HAVE DIABETES?</b>		
<b>YES</b>	6.9%	1.6
<b>YES BUT FEMALE TOLD DURING PREGNANCY</b>	0.6%	0.4
<b>NO, BORDERLINE DIABETES</b>	1.1%	.6
<b>NO</b>	91.5%	1.8

# NEW CASTLE COUNTY, DELAWARE



## BEHAVIORS/LIFESTYLE INDICATORS

Response	Percentage	Confidence Interval +/-
<b>ALCOHOL: BINGE DRINKING-FIVE OR MORE DRINKS ON ONE OCCASION IN THE PAST MONTH</b>		
YES	19.83%	3.3
NO	80.2%	3.3
<b>TOBACCO: CURRENT SMOKER (SMOKED AT LEAST 100 CIGARETTES IN THEIR LIFETIME AND CURRENTLY SMOKING )</b>		
YES	15.5%	2.5
NO	84.5%	2.5
<b>WEIGHT CONTROL: WEIGHT CLASSIFICATIONS BASED ON BODY MASS INDEX</b>		
NOT OVERWEIGHT/OBESE (BMI<=24.9)	38.9%	3.5
OVERWEIGHT (BMI 25.0 - 29.9)	34.8%	3.3
OBESE (BMI 30.0 AND ABOVE)	26.3%	3.1

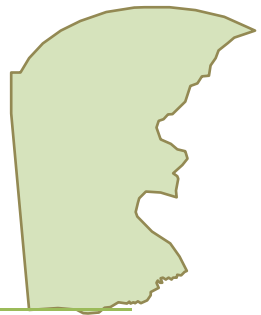
## PREVENTATIVE CARE/TESTING

Response	Percentage	Confidence Interval +/-
<b>IMMUNIZATION: ADULTS AGED 65+ WHO HAVE HAD A FLU SHOT IN THE PAST YEAR?</b>		
YES	67.7%	5.7
NO	32.3%	5.7
<b>WOMENS HEALTH: ? WOMEN AGE 40 AND OVER HAD A MOMMOGRAM WITHIN THE PAST 2 YEARS.</b>		
DID NOT HAVE EXAM	16.0%	3.1
HAD EXAM	84.0%	3.1
<b>MEN AGES 40 AND OVER WHO HAVE HAD A PSA TEST WITHIN THE PAST TWO YEARS.</b>		
DID NOT HAVE EXAM	46.7%	5.9
HAD EXAM	53.3%	5.9

# NEW CASTLE COUNTY, DELAWARE

## BEHAVIORAL & LIFESTYLE RISK FACTOR TRENDS: 2000-2008

### ORAL HEALTH



Year	Percentage	Confidence Interval +/-
<i>ORAL HEALTH: HAVE YOU VISITED A DENTIST OR DENTAL CLINIC WITHIN THE PAST YEAR FOR ANY REASON?</i>		
YES	79.8%	2.9
NO	20.2%	2.9

### SOURCES

#### Demographics

American Community Survey, 2007

#### Vital Statistics

*Delaware Health and Social Services, Division of Public Health Delaware Vital Statistics Annual Report 2006.* Please note this was the most recent report available at the time this report was compiled.

Available at <http://www.dhss.delaware.gov/dhss/dph/hp/2006.html>.

#### Behavioral Risk Factor Surveillance System

Delaware Health and Social Services, Division of Public Health, Behavioral Risk Factor Surveillance System (BRFSS), [2000-2008]. All data presented in charts is for year 2008, unless marked by a \*. This data is from 2007 – due to availability.